

FRAMING PLAN
(ALL DIMENSIONS ARE HORIZONTAL)

NOTE: ALL BOLTS TO BE 8 ϕ H.S. A325-TYPE 1.
(except @ form bracket holes see note below)

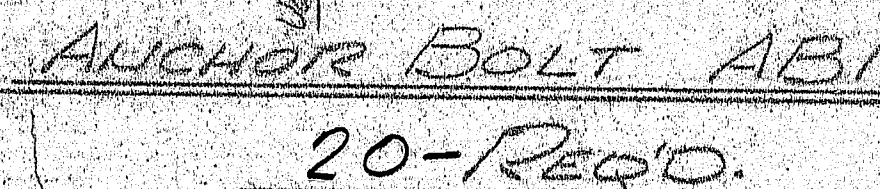
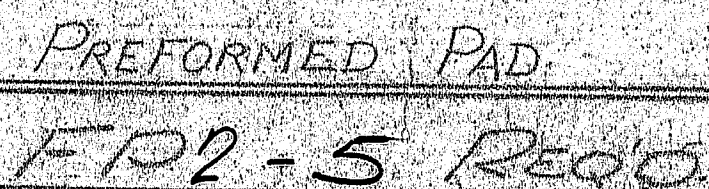
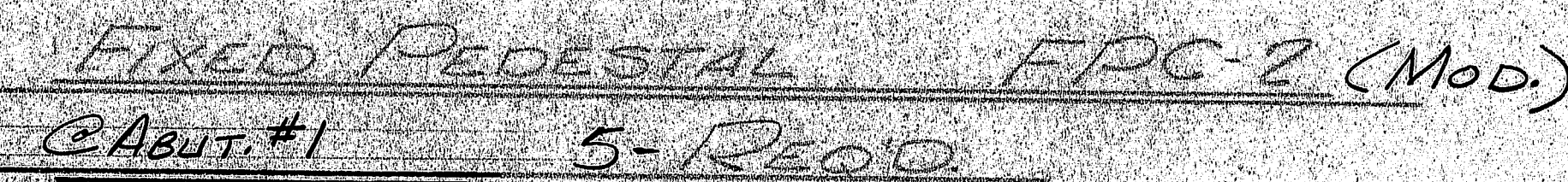
FORM BRACKET HOLES
Form bracket holes are to be plugged with 5/8 ϕ X 1-1/2 carriage bolts.
Heads to be on outside. Holes to be completely covered.

ITEM No. 504.70
PROJECT No. I-95-9(80)

APPROVED: 8-17-78

FRAMING PLAN			
PRINT DIST.	Bancroft & Martin Inc.		
3p 7-19-78 App.	South Portland, Maine 04106		
2 8-22-78 E.H.	JOB: U.S. RTE. 2 over I-95 N.B.		
2 1-29-79 F.S.F.	DYER BROOK, MAINE		
	CUSTOMER: REED & REED		
	DESIGNER: STATE OF MAINE DEPT. of TRANS.		
REV.	ORDER NO.	JOB NO.	DRAWING NO.
CHECKED 8-17-78 MGP		578-40	E-1
DRAWN 6-21-78 BB			

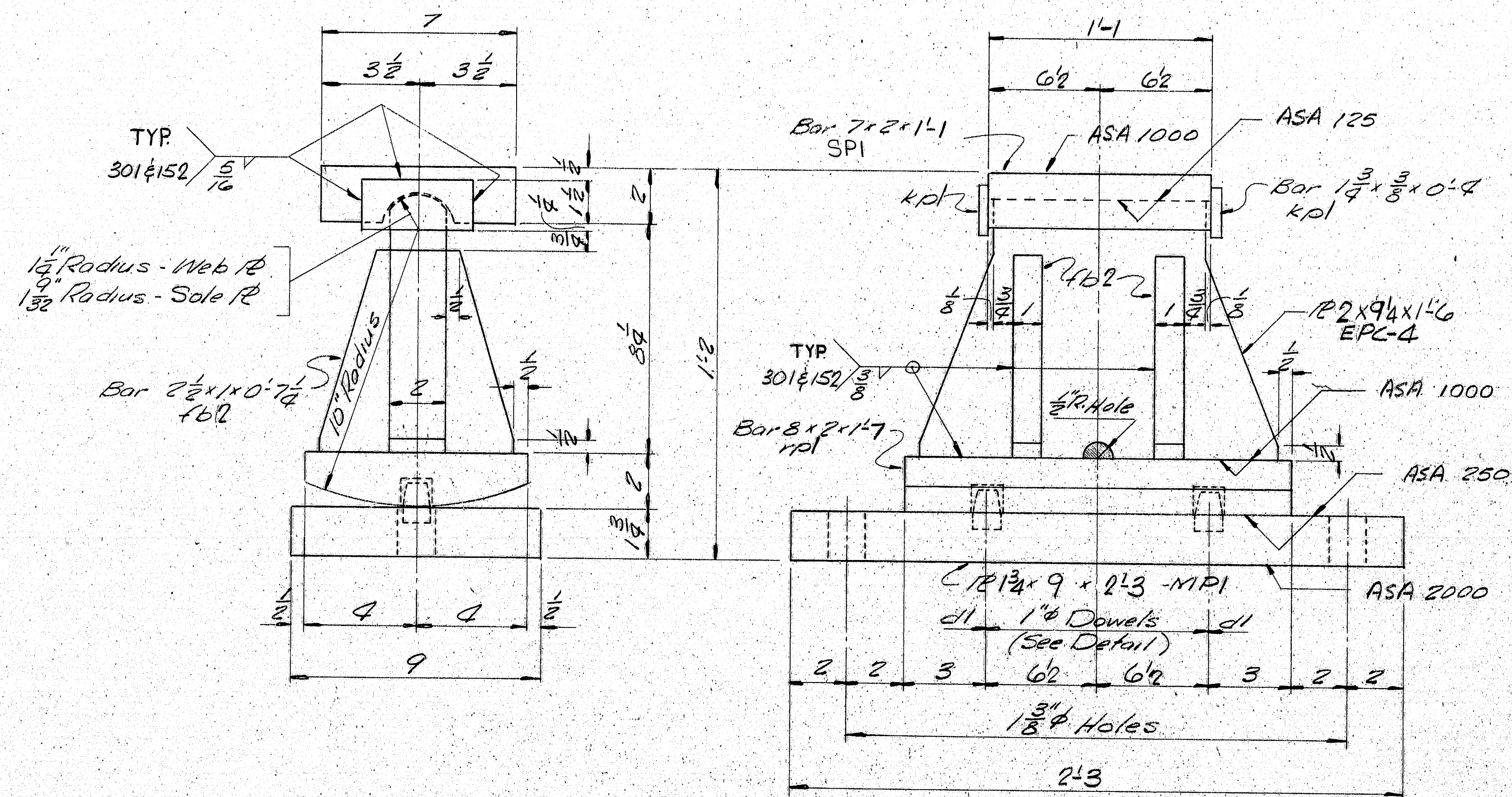
160-31



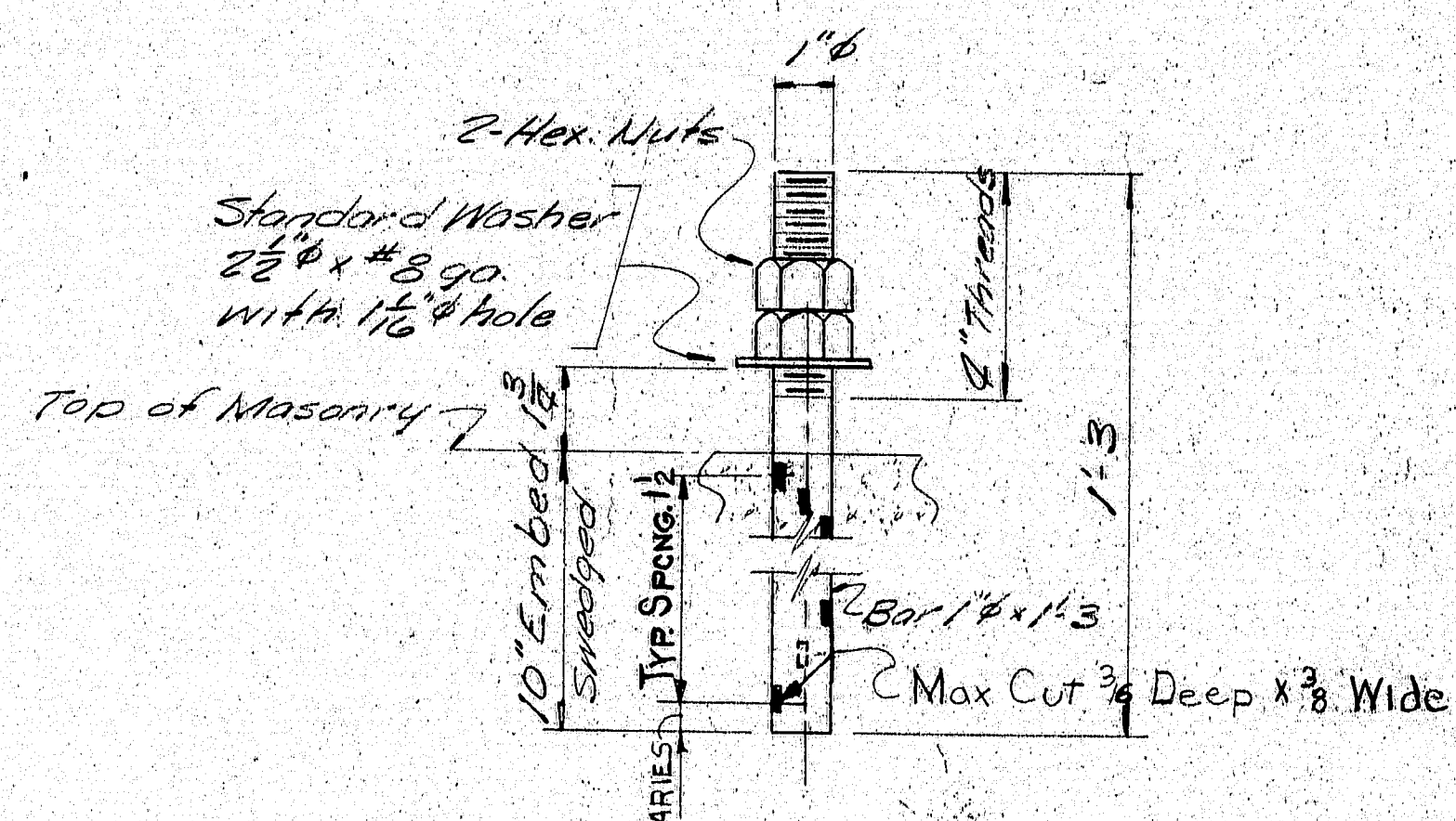
No paint on top of sole plates "SPI" and 1" down from top on sides coat with boiled linseed oil.
No paint on surface with ASA-125 finish, coat with mixture of white lead and tallow.
No paint on Anchor bolts - Oil them.
Masonry RS shall receive 2-coats of shop paint (mp1)

SHIP		BILL OF MATERIAL				Job. No. 578-40	DWG. NO. 51-1
MARK	NO.	MARK	SHAPE	LENGTH	WT.	ITEM No.	REMARKS
FRG2	5		Bar 7/8 x 2	1 7		2/D	Cut from R2 x 7/8 (Plan Milling) L7
	5	mol	RE 1/2 x 10	2 1		2/E	
SPI	5		Bar 7/8 x 2	1 1		2/A	
	10	KPI	Bar 1 1/2 x 3/8	0 8		2/B	
	20	KBI	Bar 3/8 x 1	0 5 1/2		2/F	
AB1	20		Bar 1" dia	1 3		2/K	Swaged
	40	shap	1" Hex. Nut	—		2/L	A307
Field	20		1" Washer	—		2/M	Std. Washer A307
FR2	5		10 x 8	2 1		2/I	Preformed Pad Req. No. 11547
<p>ITEM No. 504.70 PROJECT NO. I-95-9(80)</p> <p>Seal plates "SPI" to be field welded to stringers.</p> <p>Bearing material to be ASTM A36, Anchor bolts to be ASTM A36.</p>							
BLAST CLEAN (SSPC-SP10)		<p>SHOP CONNECTIONS: see Welding Procedures.</p> <p>FIELD CONNECTIONS:</p> <p>HOLES: As noted.</p> <p>PAINT: BASIC LEAD-SILICO CHROMATE (ORANGE)</p>					
APPROVED: 8-17-78		<p>PRINT DIST.</p> <p>3p 7-19-78 App.</p> <p>2p 8-22-78 FB</p> <p>3p 8-27-78 shap</p> <p>2 1-28-78 FFF</p>					
CHRD 8-17-78 MGP		<p>BEARING PEDESTAL DETAIL</p> <p>Bancroft & Martin Inc.</p> <p>South Portland 7, Maine</p>					
DRAWN 6-2-78 BB		<p>U.S. RTE. 2 OVER I-95 N.B.</p> <p>DYER BROOK, MAINE</p>					
REVISION		<p>CUSTOMER REED & REED</p> <p>DESIGNER MAINE DEPT. OF TRANS.</p>					
REVISION		<p>JOB NO. 578-40 DWG. NO. 51-1</p>					
REVISION							

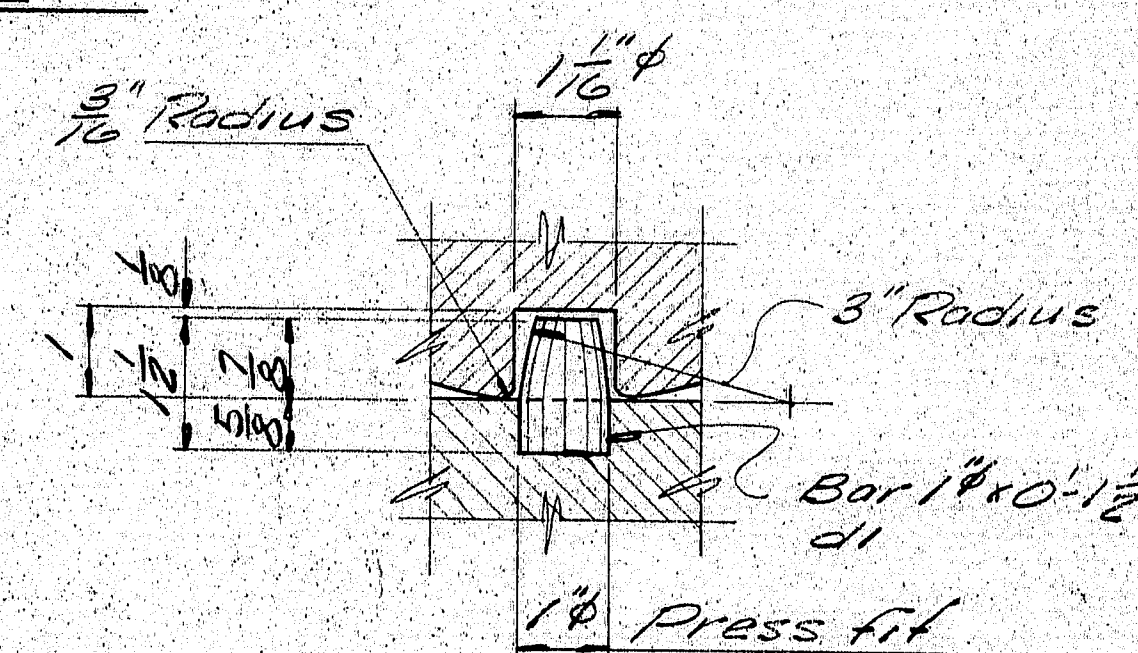
160-32 REV #164



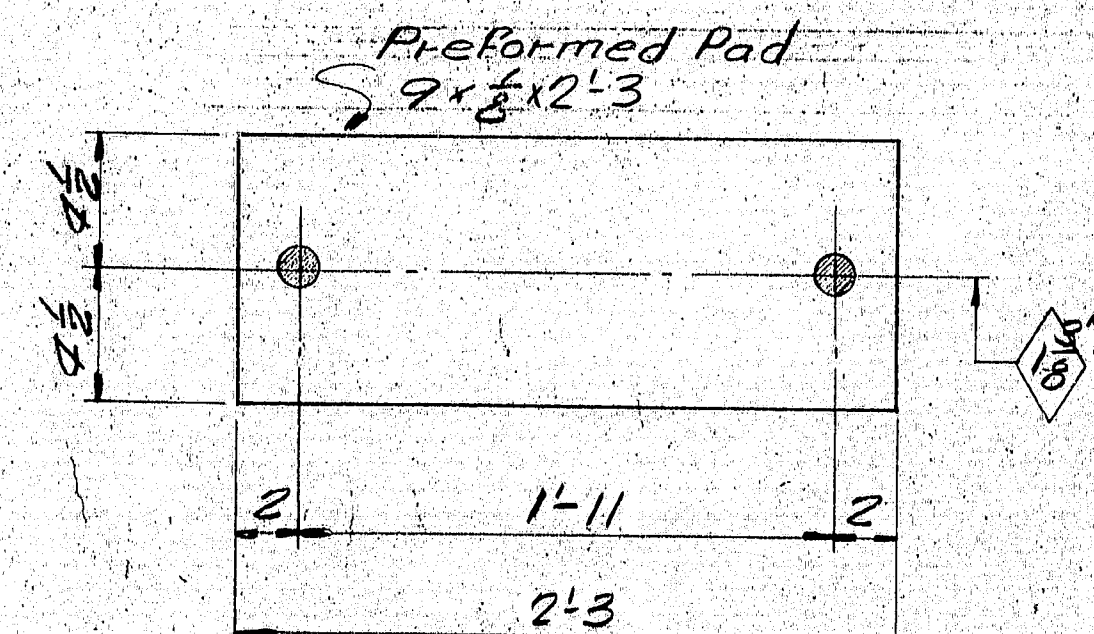
EXPANSION PEDESTAL EPC-4 (MOD)
C ABUT. # 2 5-REQ'D.



ANCHOR BOLT ABI
10-REQ'D.



DOWEL DETAIL-d1

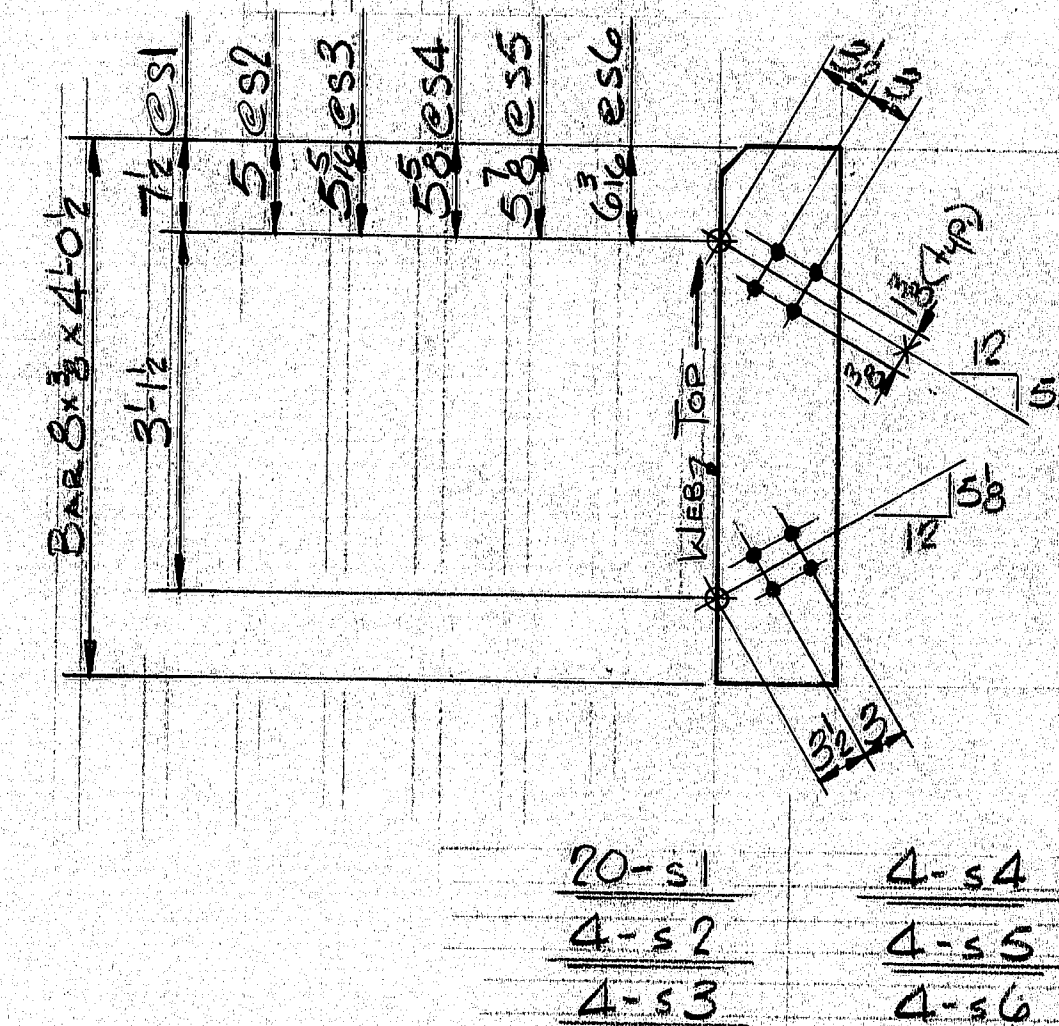
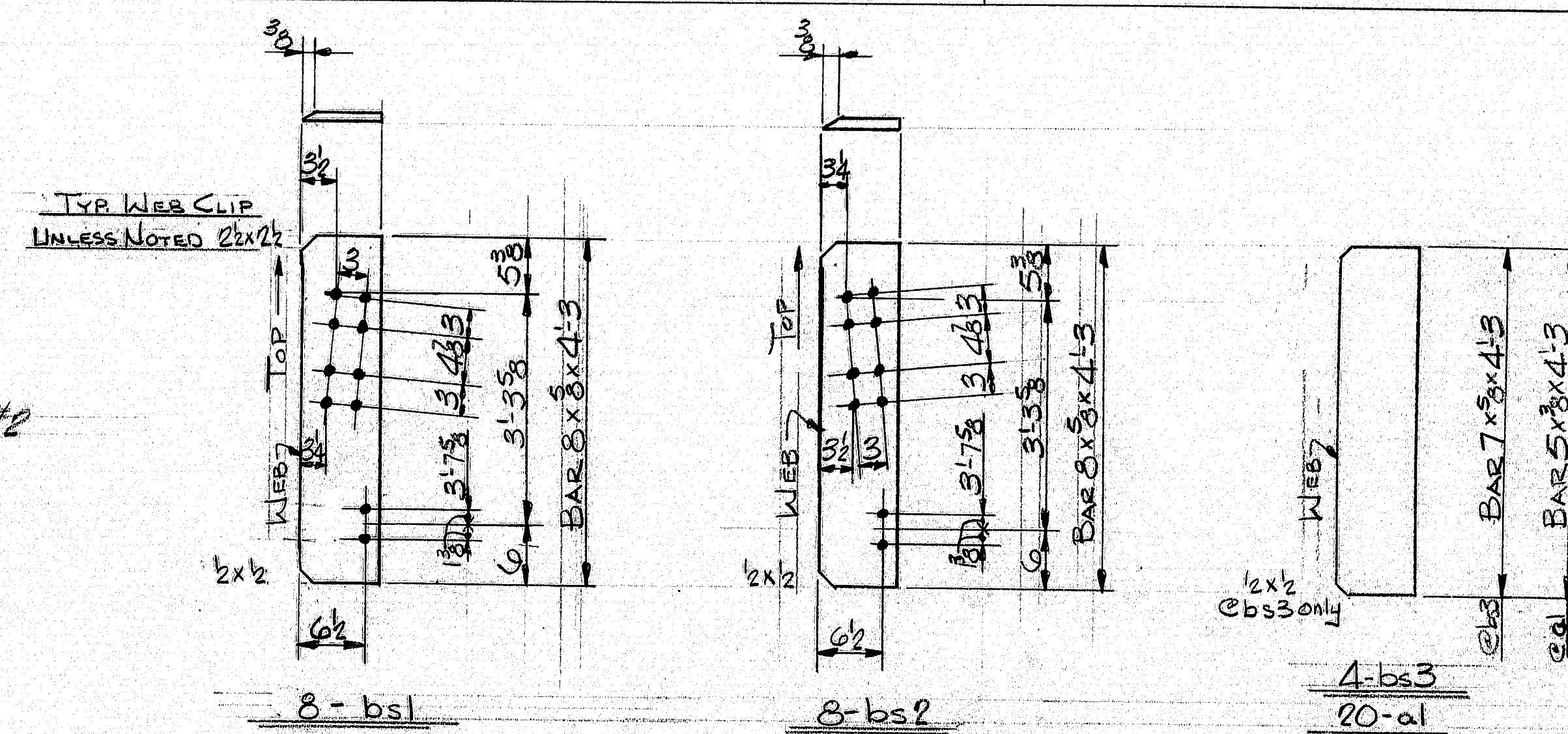
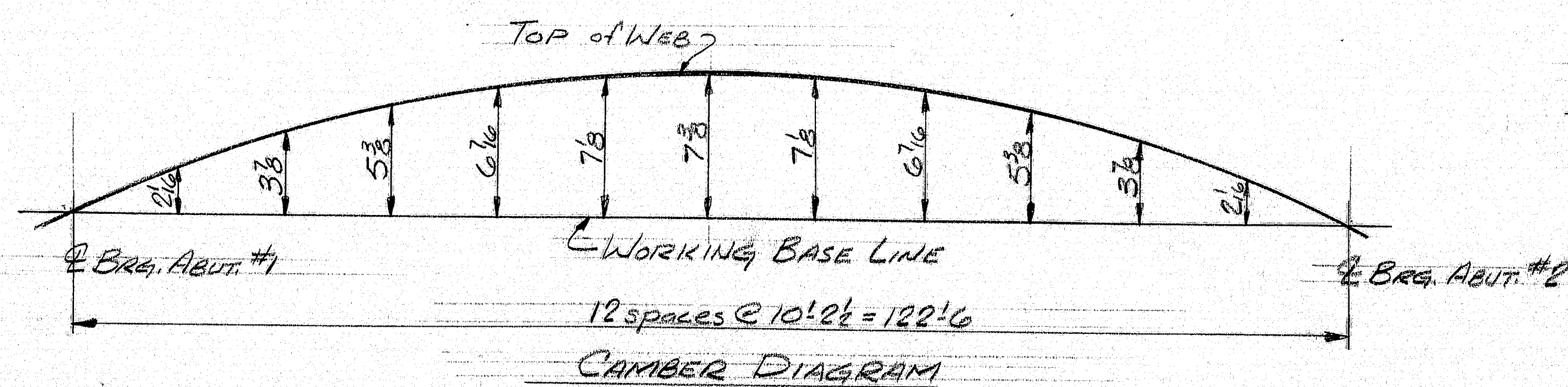


PREFORMED PAD
EPI - 5 REQ'D.

PAINT NOTE:

No paint on top of sole plates "SPI" and 1" down from top on sides, coat with boiled linseed oil.
 No paint on surface with ASA-125 finish, coat with mixture of white lead and tallow.
 No paint on Anchor Bolts - Oil tags.
 Masonry, etc. & bearing surfaces of expansion bearing pedestals shall receive 2 coats of shop paint.

SHIP		BILL OF MATERIAL					Job No. 578-40	DWG. NO. 51-2
MARK	NO.	MARK	SHAPE	LENGTH	WT.	ITEM No.	REMARKS	
EPG4	5		R 2 x 9 1/4	1	6	2/2	Cut From R 2 x 9 1/4 (See Milling) 1/2 G	
MPI	5		R 1 3/4 x 9	2	3	2/4		
	5	101	Bar 8 x 2	1	7	2/4		
SPI	5		Bar 7 x 2	1	1	2/4		
	20	162	Bar 2 1/2 x 1	0	7 1/2	2/2		
	10	d1	Bar 1 1/8	0	1 1/2	2/2	PINTLE	
	10	kpl	Bar 1 3/8 x 3/8	0	4	2/2		
ABI	10		Bar 1 1/2	1	3	2/2	Swedged	
	20	shop	1 1/8 Nut			2/2	A307	
Field	10		1 1/8 Washer			2/2	Std. Washer A307	



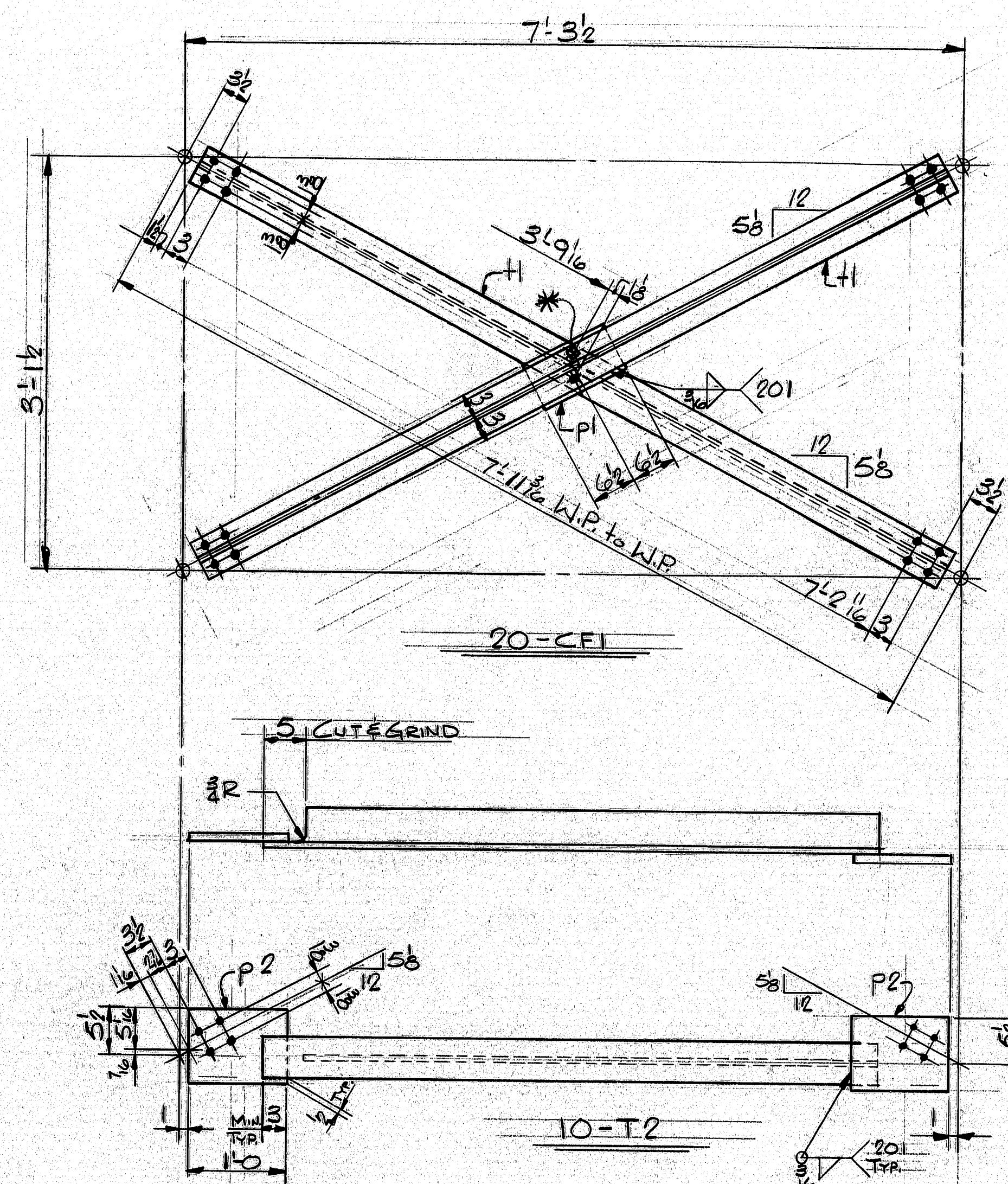
15 HOLES

ITEM No. 504.70
PROJECT No. I-95-9(80)

APPROVED: 8-17-78

GIRDER DETAILS & COMPONENTS			
PRINT DIST.	Bancroft & Martin Inc.		
7-19-78 App.	South Portland, Maine 04106		
8-22-78 F.A.	JOB: U.S. RTE. 2 OVER I-95 N.B.		
9-22-78 S.A.	DYER BROOK, MAINE		
1-29-79 F.A.	CUSTOMER: REED & REED		
	DESIGNER: STATE OF MAINE DEPT. OF TRANS.		
REV.	ORDER NO.	JOB NO.	DRAWING NO.
CHECKED 8-17-78 MGP		378-40	52-2
DRAWN 6-23-78 BGP			

160-35



* Shop Note:
Bolt w/ 3/8 x 3-1/2
A325, Type 1 For
Shipment.

FIELD NOTE:
SEE DESIGN DWG. BD113-72
FOR LOCATION OF T2.
(TYPE K CROSSFRAMES)

ALL CONNECTIONS DETAILED ON THIS DRAWING
REPRESENT BANCROFT & MARTIN INC. STANDARDS.
IN APPROVING THIS DRAWING, FOR FABRICATION,
THE ARCHITECT AND/OR ENGINEER ASSUMES THE
RESPONSIBILITY FOR THE STRUCTURAL INTEGRITY
OF ALL CONNECTIONS SHOWN.

SHIP		BILL OF MATERIAL		JOB NO.		DRAWING NO.		REV.	
MARK	NO.	MARK	SHAPE	LENGTH	WT.	ITEM NO.			
CFI	20		CROSSFRAME						
	40	+1	WT4x8.5	7' 7 1/2"	1/1				
	20	p1	Bar 6x3	1	1				
	20	shop	3/8 HS Bolt	0	2 1/2				A325, Type 1
	20	shop	3/8 HS Washer		1/4				Do
T2	10		WT5x10.5	5' 7 1/2"	1/1				
	20	p2	R3x9	1	0				

HOLES ARE FOR HIGH TENSILE BOLTS
THEY ARE TO BE FREE FROM BURRS
AND SHALL NOT BE PAINTED ON ANY
SURFACE WITHIN 5" OF SUCH OPEN
HOLES

IT. NO. 504.70 BR. NO. PROJ. NO. I-95-9(80)

FOR APPROVAL ☒ **FOR FILES & FIELD**

STEEL: ASTM. ☒ A36 ☐ A572 GR1 ☐ A588 GR1 ☐ Unless Noted

WELDING ELECTRODE: ☐ E70 ☒ See Welding Proc. ☐ None

SHOP CONN: ☒ Bolted ☒ Welded ☐ None

FIELD CONN: ☒ Bolted ☐ Welded ☐ None

HOLES: ☐ 13/16 ☒ 15/16 ☐ Unless Noted ☐ None

PAINT: ☐ None ☐ Shopcoat ☐ Galv. After Fab. ☒ As Noted

SPECIAL PAINT: BASIC LEAD SILICO CHROMATE (ORANGE)

SPECIAL CLEANING: ☒ Blast Clean ☐ None (SSPC-SP10)

CROSSFRAMES

APPROVED: 8-17-78

PRINT	DIST.	APP.
3p	7-19-78	APP.
3p	8-22-78	FAB.
2	1-24-79	F&F.
23	8-22-78	FA

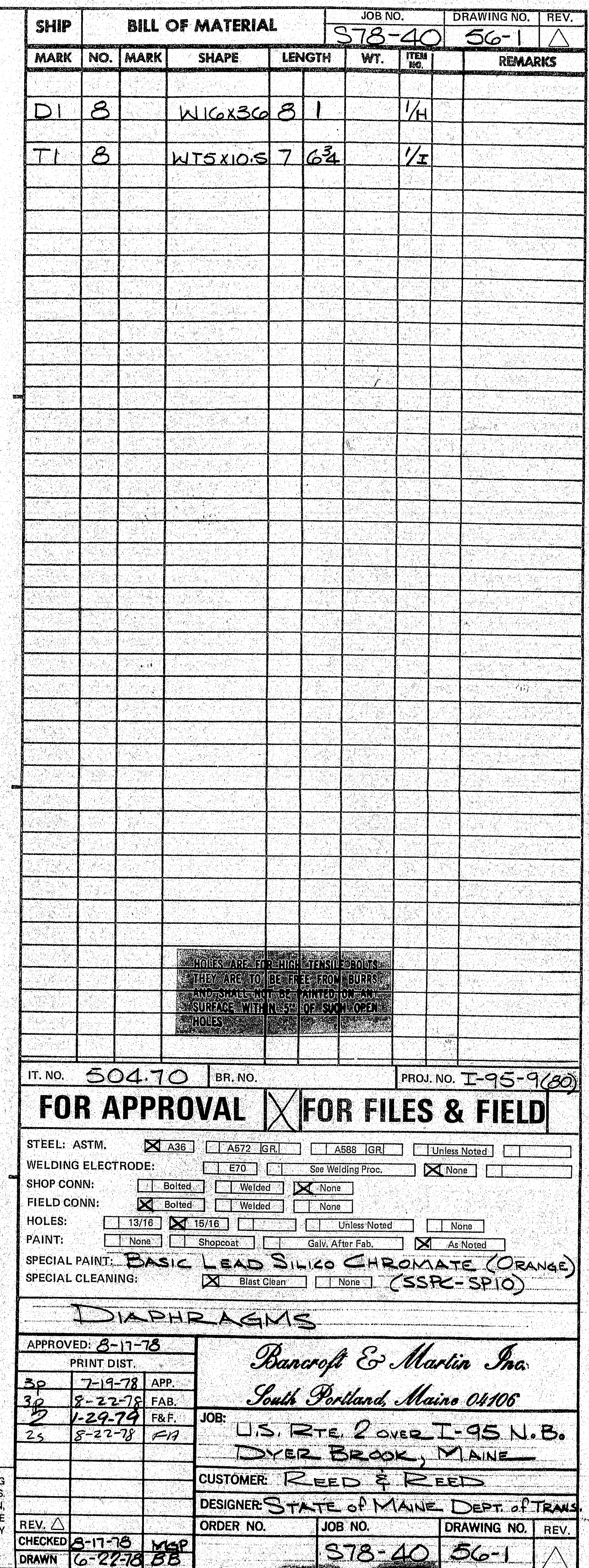
Bancroft & Martin Inc.
South Portland, Maine 04106

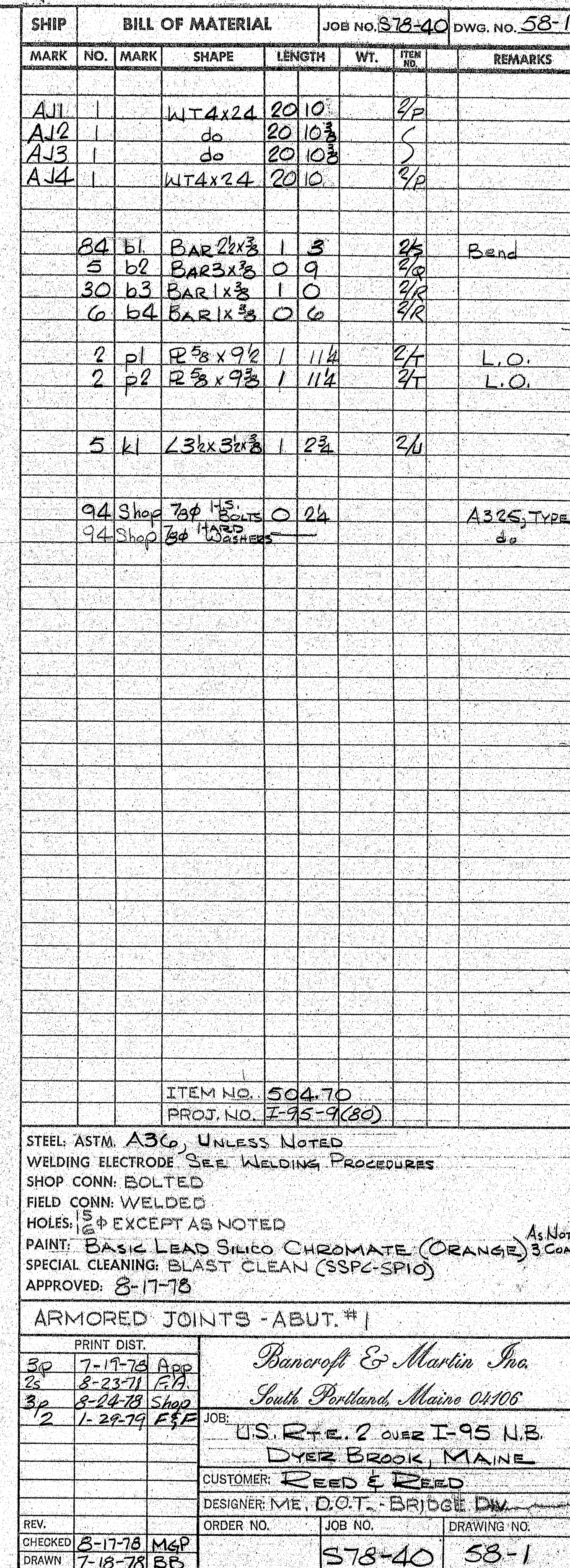
JOB: US. RTE. 2 OVER I-95 NB,
DYER BROOK, MAINE

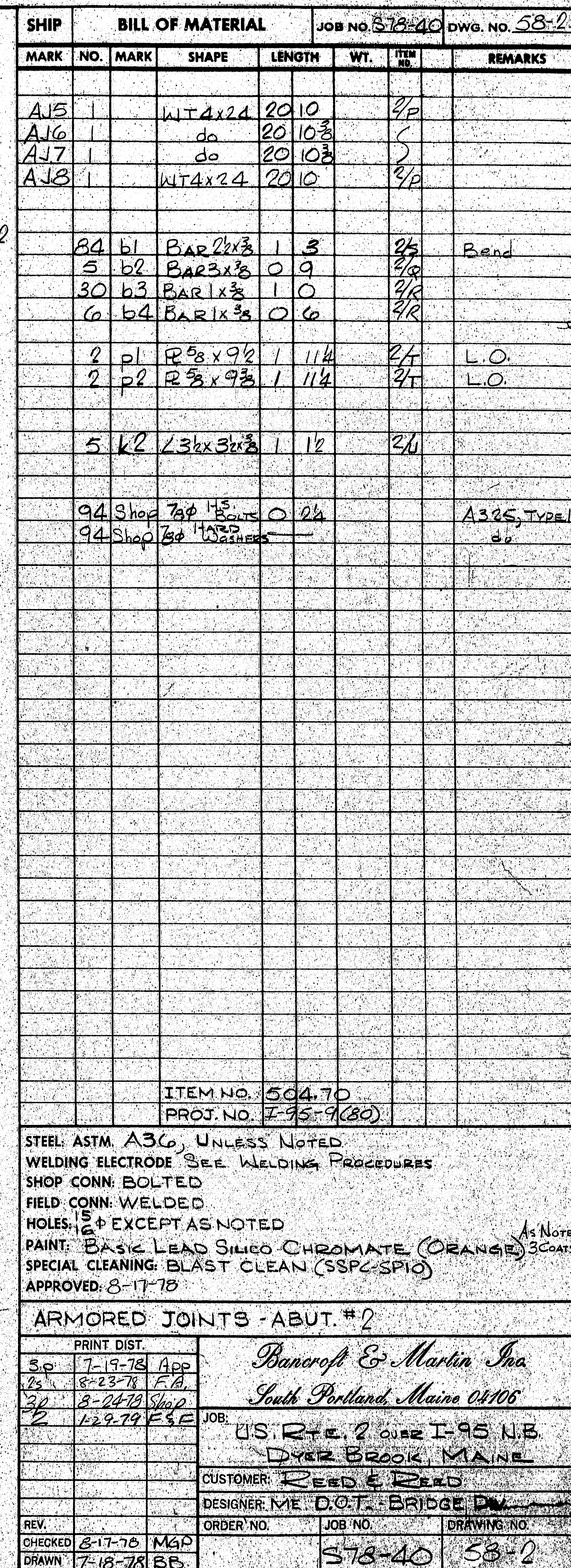
CUSTOMER: REED & REED

DESIGNER: STATE OF MAINE DEPT. OF TRANS.

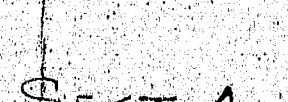
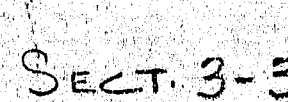
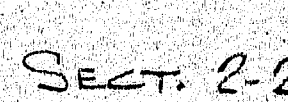
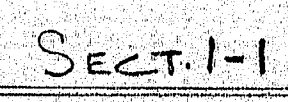
REV.	△	ORDER NO.	JOB NO.	DRAWING NO.	REV.
CHECKED	8-17-78	MGP		378-40	53-1
DRAWN	6-23-78	BB			



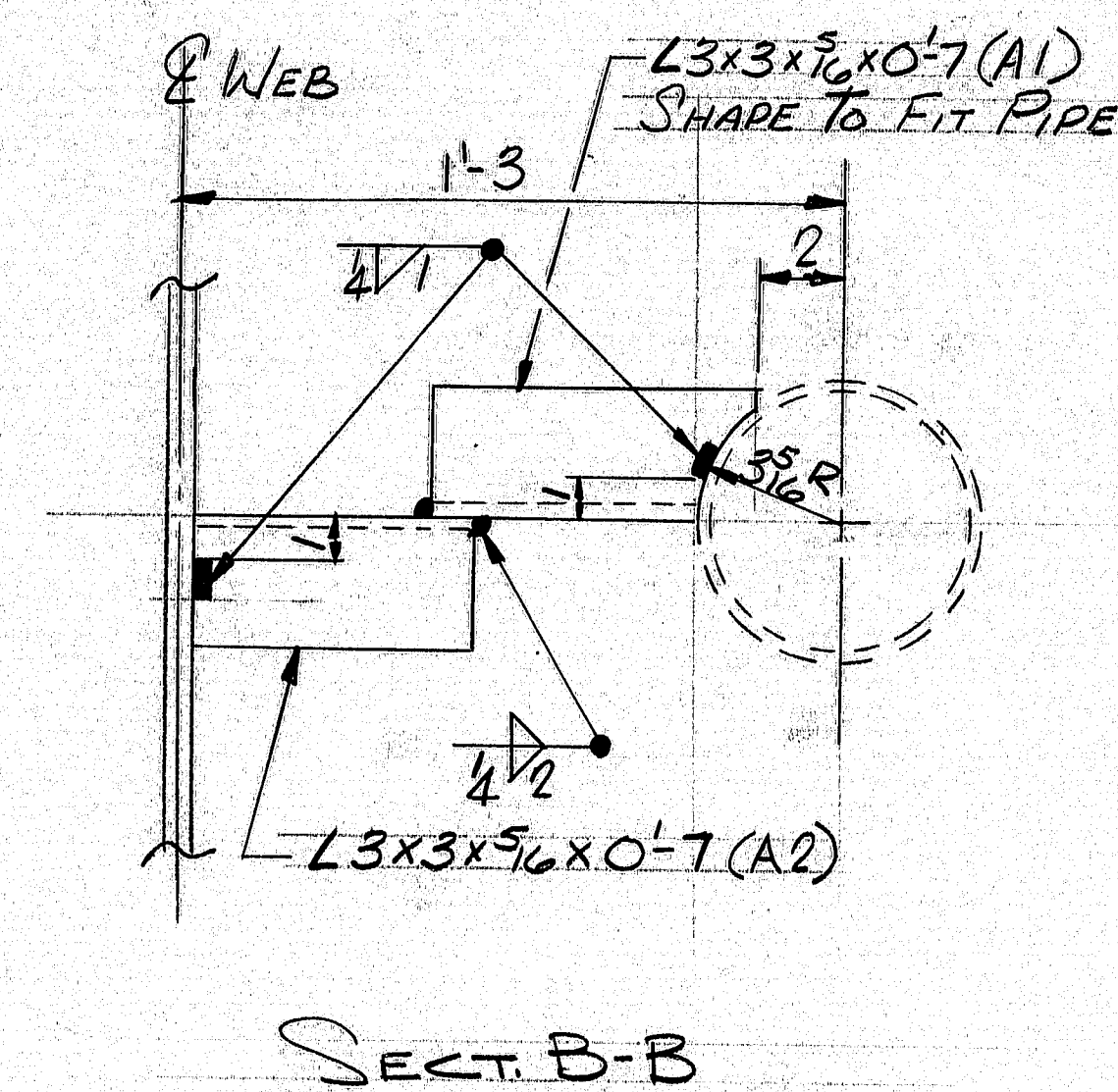
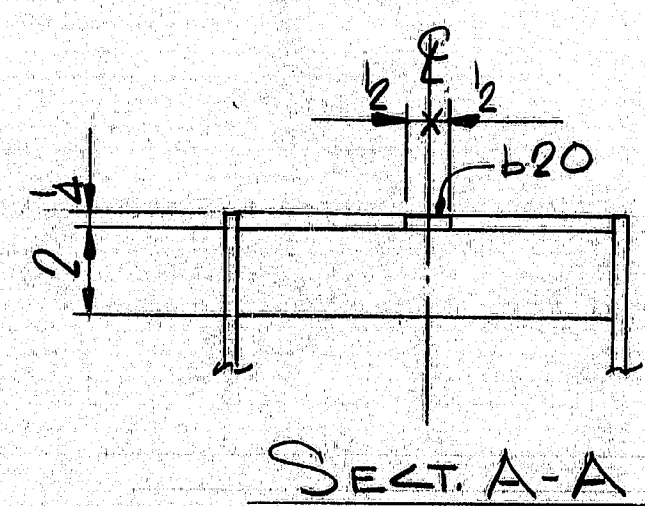




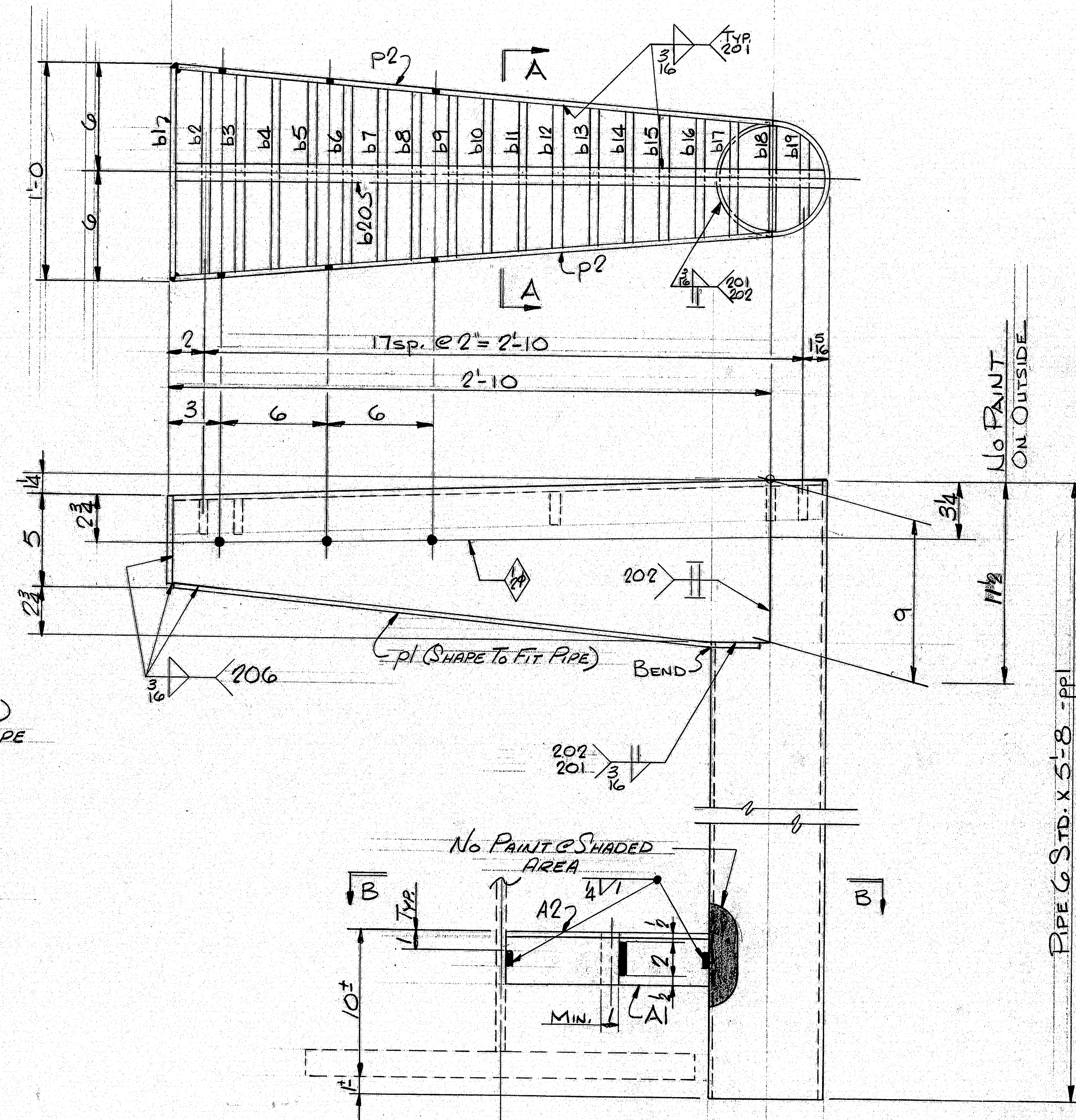
160-39



160-40



A1-8 REQ'D
A2-8 REQ'D
(NO PAINT)



DRAIN DRI-8 REQ'D

SEE STATE'S DWGS. FOR LOCATION

ALL CONNECTIONS DETAILED ON THIS DRAWING REPRESENT BANCROFT & MARTIN INC. STANDARDS. IN APPROVING THIS DRAWING, FOR FABRICATION, THE ARCHITECT AND/OR ENGINEER ASSUMES THE RESPONSIBILITY FOR THE STRUCTURAL INTEGRITY OF ALL CONNECTIONS SHOWN.

SHIP		BILL OF MATERIAL		JOB NO.		DRAWING NO.		REV.	
MARK		NO. MARK		SHAPE		LENGTH		WT.	
DRI-8				Shop Assembly		—			
8	p1	2	9	1/2					
16	p2	2	9 3/4	1/2					L.O. & Bend
8	b1	0	11 3/8	1/2					L.O.
8	b2	0	11 3/8	1/2					
8	b3	0	10 1/2						
8	b4	0	10 1/2						
8	b5	0	10 1/2						
8	b6	0	9 3/8						
8	b7	0	9 3/8						
8	b8	0	9 3/8						
8	b9	0	8 3/4						
8	b10	0	8 3/4						
8	b11	0	8 3/4						
8	b12	0	8 3/4						
8	b13	0	7 3/8						
8	b14	0	7 3/8						
8	b15	0	7 3/8						
8	b16	0	6 3/8						
8	b17	0	6 3/8						
8	b18	0	6 3/8						
8	b19	0	5	1/2					
8	b20	3	0 1/2	1/2					
8	ppl	5	8	1/2					A33-Gr B Type E or S
A1	8	0	7	1/2					Shape to fit pipe
A2	8	0	7	1/2					No Fab. Paint
IT. NO. 504.70 BR. NO. PROJ. NO. I-95-9(30) FOR APPROVAL <input checked="" type="checkbox"/> FOR FILES & FIELD STEEL: ASTM. <input checked="" type="checkbox"/> A36 <input type="checkbox"/> A572 GR1 <input type="checkbox"/> A588 GR1 <input type="checkbox"/> Unless Noted WELDING ELECTRODE: <input type="checkbox"/> E70 <input checked="" type="checkbox"/> See Welding Proc. <input type="checkbox"/> None SHOP CONN: <input type="checkbox"/> Bolted <input checked="" type="checkbox"/> Welded <input type="checkbox"/> None FIELD CONN: <input type="checkbox"/> Bolted <input checked="" type="checkbox"/> Welded <input type="checkbox"/> None HOLES: <input type="checkbox"/> 13/16 <input type="checkbox"/> 15/16 <input checked="" type="checkbox"/> 1 1/2 <input type="checkbox"/> Unless Noted <input type="checkbox"/> None PAINT: <input type="checkbox"/> None <input type="checkbox"/> Shopcoat <input type="checkbox"/> Galv. After Fab. <input checked="" type="checkbox"/> As Noted SPECIAL PAINT: BASIC LEAD SILICO CHROMATE (ORANGE) SPECIAL CLEANING: <input checked="" type="checkbox"/> Blast Clean <input type="checkbox"/> None (SSPC-SP10)									
DRAINS APPROVED: 8-17-78 PRINT DIST. 3p 7-19-78 APP. 13p 8-22-78 FAB. 2p 1-24-79 FR.F. 2s 8-22-78 FA. BANCROFT & MARTIN Inc. South Portland, Maine 04106 JOB: LIS. Rte. 2. OVER I-95 N. B. DYER BROOK, MAINE CUSTOMER: REED & REED DESIGNER: STATE OF MAINE DEPT. OF TRANS. ORDER NO. JOB NO. DRAWING NO. REV. 8-17-78 MGP 578-40 59-1 7-14-78 BB									

[illegible]